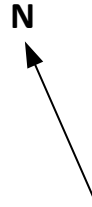
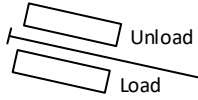


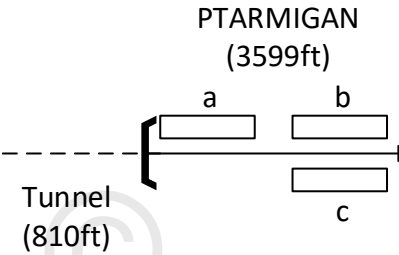
BASE  
(2083ft)



PTARMIGAN platform usage

- a Summer season unload
- b Winter season unload
- c Summer season load

SHIELING  
(2510ft)  
(Winter season only)



Summit  
4085ft X

Figures in ft are heights above sea level

# CAIRNGORM MOUNTAIN RAILWAY, AVIEMORE

© P. Scott

01-08-18

6' 6"

N